

LA BIENNALE DI VENEZIA



The European Graduate School Student Guidebook



June 6-8



Venice, Italy
Venice Biennale



EGS



The European
Graduate School
EST. 1994



Carlos Amorales's Venice Seminar

JUNE 6 : 9:30 AM INTRODUCTION AT SAN SERVOLO

JUNE 7: SEMINAR FROM 10:30 AM-1:30 PM; 3:00 PM - 5:30 PM.

JUNE 8: SEMINAR FROM 10:30 AM - 1:30 PM; 3:00 PM - 5:30 PM.

Program Offerings
<https://egs.edu/>

The European Graduate School
SAAS-FEE, SWITZERLAND

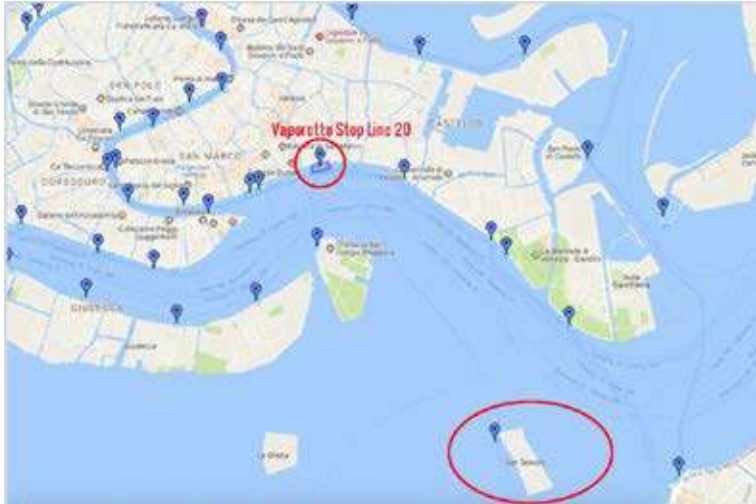
Offering MA and PhD degrees:

- Philosophy, Art, and Critical Thought
- Literary, Musical, and Visual Thought

Getting to San Servolo

The Island of San Servolo is located in Venice's historic centre across from Saint Mark's Square, easily accessible by ACTV public waterbus (line 20, service every 20/40 minutes).

Departures from the San Zaccaria MVE boat stop, approximate travel time: 8-10 minutes.



Travel Information

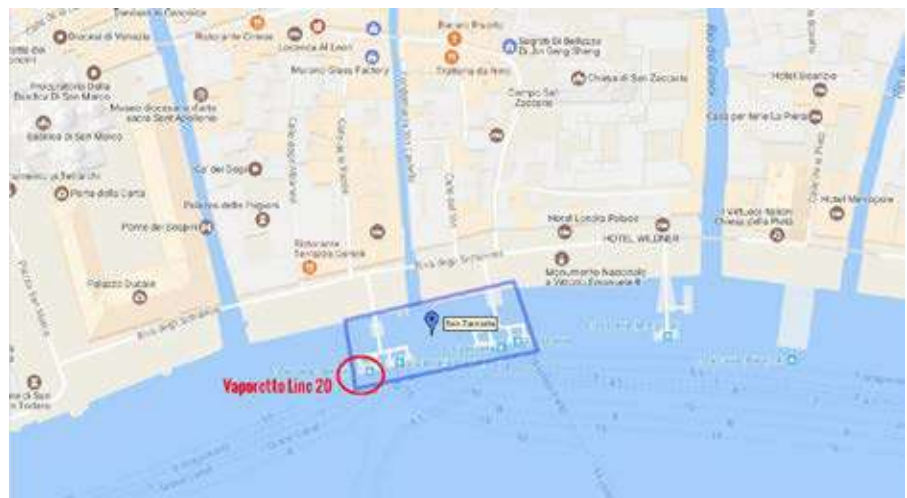
From Marco Polo Airport >San Marco > San Servolo

Alliguna shuttle boat service to San Marco
Approximate travel time: 40 minutes

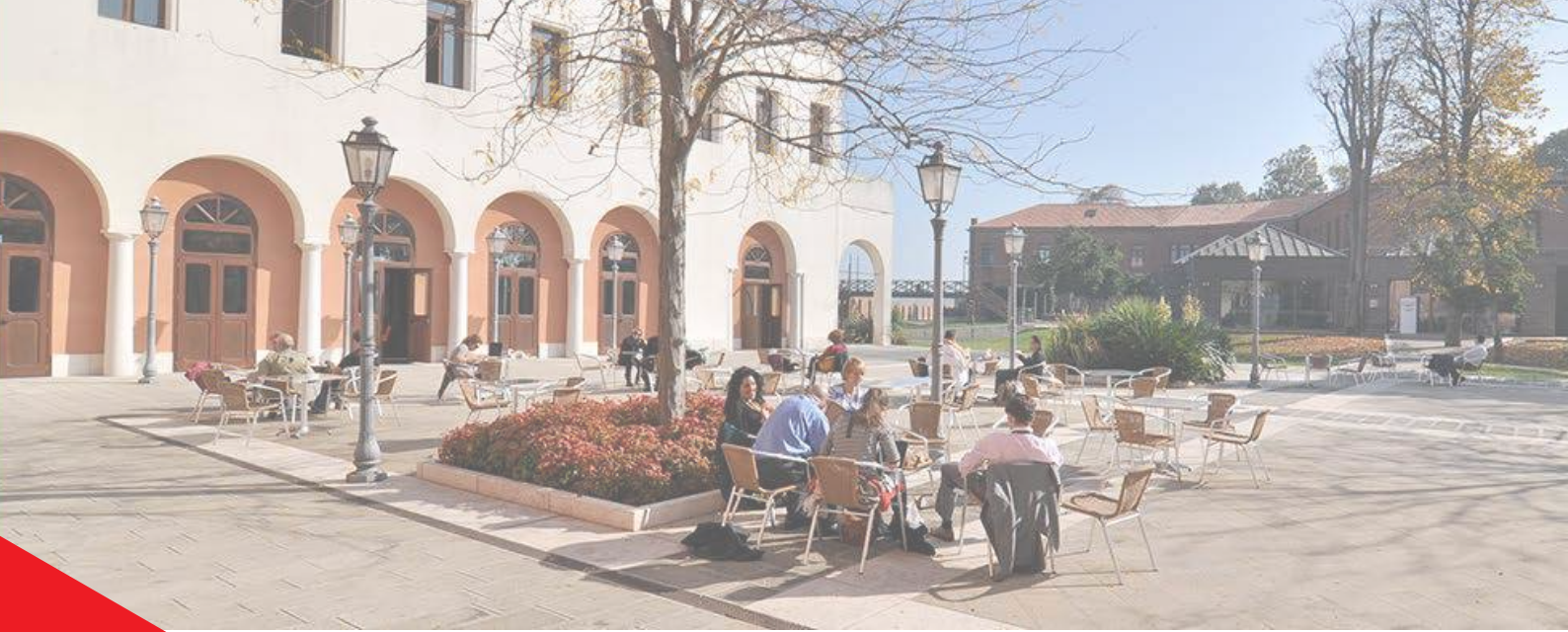
From San Marco go by foot to S. Zaccaria MVE boat stop
line 20 to San Servolo

From Venice Train Station >San Marco > San Servolo

ACTV public waterbuses depart from the train station to San Marco/San Zaccaria (upon arrival at San Zaccaria, go on foot to the San Zaccaria MVE waterbus stop to catch line 20 to San Servolo)



For more information, please visit: <http://servizimetropolitani.ve.it/en/where-we-are/>



Students are encouraged to stay at the **San Servolo Residential Centre** as it is the closest to the Biennale.

Accomodation

Room Type	Minimum Price	Maximum Price
1 Bed	€19	€95
2 Beds	€30	€135
3 Beds	€45	€160
4 beds	€60	€170
Suite	€45	€160

*Price Breakdown as per San Servolo Residential Centre website include 10% VAT

Check In is available after **1:00 PM**. Please complete **check-out** by **11:00 AM** on the departure date.

Payments: Visa, Euro/MasterCard, Maestro, CartaSi credit cards are accepted.

Luggage deposit and post: an unguarded luggage deposit and a mailbox are available. The reception can receive letters and/or packages for guests. The reception desk at San Servolo is staed 24/7 and can be reached at +39 041 276 5001.

For more information on the San Servolo Residential Centre, please visit:

<http://sanservolo.servizimetropolitani.ve.it/en/living-center/>



Services

Room Services:

All rooms have bathroom, telephone and television, air conditioning and free WiFi.

Daily housekeeping

Hair dryer on request, available at the reception

ISLAND SERVICES:

San Servolo Cafè:

The coffee shop is open daily from 7:30 AM to 6:00 PM. Major national and international newspapers and basic necessities are available for purchase. Hot and cold beverage vending machines are available in the residences.

San Servolo Restaurant:

Buffet breakfasts (7:30 to 10:00) for €7.00; self-service lunch (12:30 to 2:30) and dinner (7:00 to 9:30) for €11.00, or €20.00 for table service.

Travel to Saas-Fee -Contact

Students will make their own travel arrangements from Venice to Saas-Fee on **June 9th**.

We recommend that students go by train through Milan and from Milan again take the train to Visp or Brig, Switzerland, and from there take the bus to Saas-Fee. Students are also free to make their own travel arrangements, however we recommend the following route:

**Venezia Santa Lucia Train Station > Milano Centrale > *Visp Railway Station or Brig Railway Station*
>Bus to Saas-Fee**

EGS CONTACT:

Nemanja Mitrovic

Email: nemanja.mitrovic@egs.edu

Tel: +381 631 613 212

Sarah Hannis

Email: admissions@egs.edu

